



University of  
Southern  
Queensland

# SOUTHERN QUEENSLAND WEED FORUM

University of Southern Queensland  
Toowoomba Q 4350

19<sup>th</sup> April, 2023

# Sponsors and organisers



This project is funded by Australian Government's National Landcare Program.

Special mention:

- Frank Ondrus, HOPE
- Janet Barker, Invasive Species Queensland
- Isabella Murphy, SQLandscapes
- Toni Gillis, University of Southern Queensland

Time	Description
1pm - 1.10pm	Introduction – setting the scene: Weeds: What are they? Where are they? And how do we deal with them?
1.10pm – 1.40pm	Janet Barker, Invasive Species QLD - An overview of Invasive Species Queensland (formerly Weed Society of Queensland)
1.40pm – 1.45pm	Q&A
1.45pm – 2.15pm	Andrew Davidson & Isabella Murphy, SQLandscapes - How do we manage weeds differently together for a flourishing landscape?
2.15pm – 2.20pm	Q&A
2.20pm – 2.35pm	--- Afternoon Tea ---
2.35pm – 3pm	Bruce Lawrie, Condamine Catchment Management Assn (CCMA) - Impact of weeds on farming communities
3pm – 3.05pm	Q&A
3.05pm – 3.25pm	Hugh Krenske, Friends of the Escarpment Parks (FEP) Toowoomba - Weed Issues on the Toowoomba Escarpment
3.25pm – 3.30pm	Q&A
3.30pm - 3.55pm	Plenary session: Wrap Up plus Where to from here?
3.55pm - 4.00pm	Closing remarks

# Weeds: What are they? Where are they? And how do we deal with them?

**Weed (*definition*):** a plant that is not valued where it is growing and is usually of vigorous growth, especially one that tends to overgrow or choke out more desirable plants (Merriam-Webster)

→ Species that become dominant when introduced into new environments - often due to lack of 'natural enemies' and other factors that keep them in check in their native environment

## Issues in agricultural situations:

- competition with crop species for space/nutrients/soil moisture/light;
- contamination of agricultural products (grains, fibre)  
– costs and potential consumer impacts
- animal welfare issues
- land and water degradation issues

## Ecological/biodiversity conservation issues:

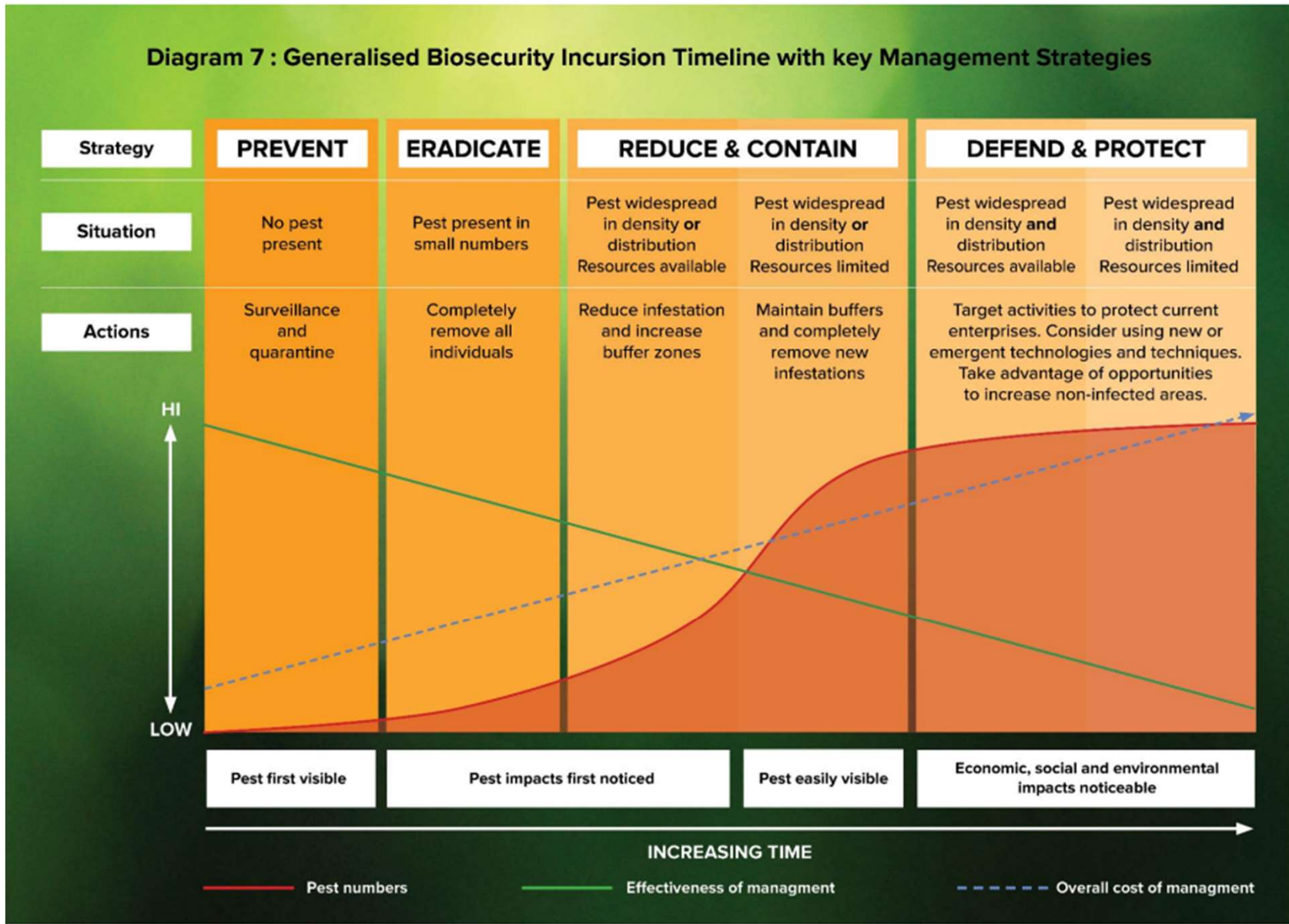
- competition for resources
- associated with native species decline & changes in veg community composition
- disruption of ecosystem processes
- terrestrial and aquatic ecosystem degradation
- reduction in provision of ecosystem services

Estimated cost of weeds to Australian agriculture > \$4 billion per year.

No current estimate of environmental cost!

(Queensland Government, 2023)

**Diagram 7 : Generalised Biosecurity Incursion Timeline with key Management Strategies**



# Principles of pest management

1. **Integration** of pest species management into management of natural resources and agricultural systems.
2. **Public awareness:** Public awareness and knowledge of weed and pest animal must be raised to increase the capacity and willingness of individuals to participate in control.
3. **Commitment:** Effective weed and pest animal management requires shared responsibility, capability, capacity and a long-term commitment by land owners/managers, the community, industry groups and government.
4. **Consultation and partnership arrangements** between land managers, local communities, industry groups, state government agencies and local governments to achieve a collaborative and coordinated approach.
5. **Planning** based on risk management to ensure that resources target the priorities identified at local, regional, state and national levels.
6. **Prevention and early detection and intervention** is generally more cost-effective than other strategies.
7. **Best practice** weed and pest animal management based on ecologically and socially responsible practices that protect the environment and the productive capacity of natural resources while minimising impacts on the community.
8. **Improvement (research, monitoring and evaluation)** to ensure evidence-based decision-making and improves pest management practices.

## Resources:

- Weed Spotters Network Queensland: [Weed Spotters Network Queensland | Environment, land and water | Queensland Government \(www.qld.gov.au\)](https://www.qld.gov.au/environment/land-and-water/weed-spotters-network-queensland)
  - a community-based weed alert system in Queensland to find, identify and document new occurrences of potential weeds so that timely preventative actions can be taken.
- [Weed Spotters Network Queensland eLearning](#)
  - online course on how to:
    - understand how Queensland manages biosecurity risk of invasive plants (weeds),
    - learn more about weeds in Queensland and where they might occur,
    - understand your general biosecurity obligation for weeds,
    - identify Queensland prohibited category weeds using key characteristics,
    - be an effective and informed member of the Weed Spotter Network of Queensland,
    - confidently report a prohibited weed,
    - stay safe and minimise health risks and hazards while weed spotting.



# Weeds Australia

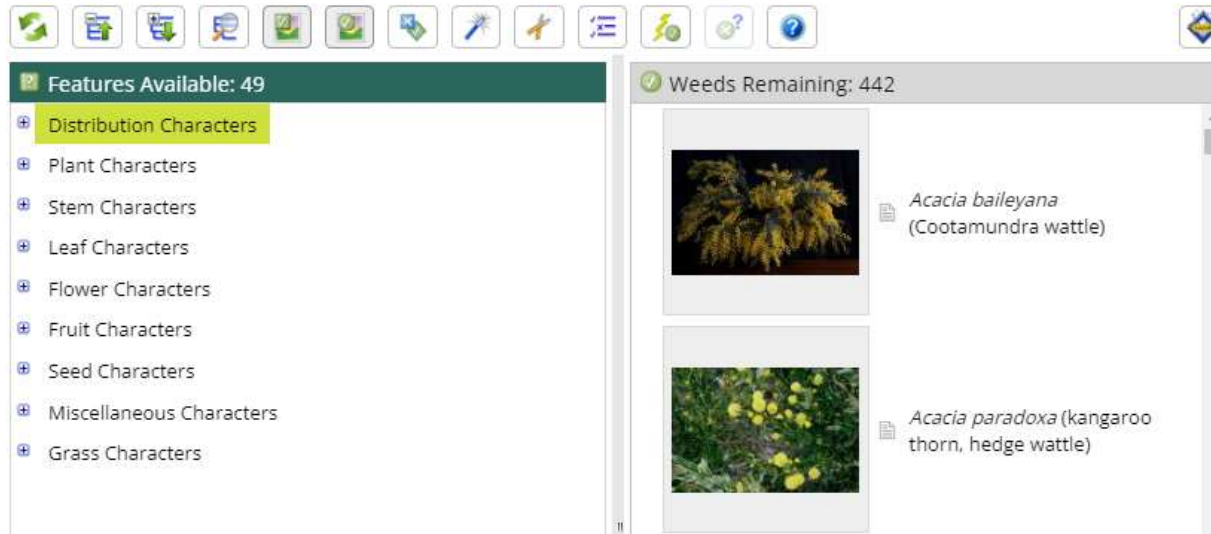
<https://weeds.org.au/identify/>



## Identify a weed in your region

To quickly identify a weed, you can consult the interactive key below. You can also share photos to plant identification groups on Facebook (e.g. [Plant Identification Australia](#)) or [iNaturalist](#), where your photos will be identified by members. If you still can't identify your weed, you can contact your state or territory's herbarium, with links and contact details available in the Connect section.

A new national website and mobile app called WeedScan will be available in April 2023 to help you to identify priority weeds from photos, make records and access management information.





More information:



## BIOSECURITY PLAN

*for Invasive Plants and Animals*

Time	Description
1pm - 1.10pm	Introduction – setting the scene: Weeds: What are they? Where are they? And how do we deal with them?
1.10pm – 1.40pm	Janet Barker, Invasive Species QLD - An overview of Invasive Species Queensland (formerly Weed Society of Queensland)
1.40pm – 1.45pm	Q&A
1.45pm – 2.15pm	Andrew Davidson & Isabella Murphy, SQLandscapes - How do we manage weeds differently together for a flourishing landscape?
2.15pm – 2.20pm	Q&A
2.20pm – 2.35pm	--- Afternoon Tea ---
2.35pm – 3pm	Bruce Lawrie, Condamine Catchment Management Assn (CCMA) - Impact of weeds on farming communities
3pm – 3.05pm	Q&A
3.05pm – 3.25pm	Hugh Krenske, Friends of the Escarpment Parks (FEP) Toowoomba - Weed Issues on the Toowoomba Escarpment
3.25pm – 3.30pm	Q&A
3.30pm - 3.55pm	Plenary session: Wrap Up plus Where to from here?
3.55pm - 4.00pm	Closing remarks

*On behalf of the organisers and sponsors –*

*Thank you!*



National  
Landcare  
Program



This project is funded by Australian Government's National Landcare Program.