

Southern Queensland Weed Forum

Managing weed impacts in Natural and Farming systems.



Presented by Bruce Lawrie
Condamine Catchment Management Committee Member

Our Condamine Catchment Community with the Capacity to Achieve a Sustainable Future

P O Box 544 Highfields Qld 4352

1 Woody Vegetation thickening @ Charter



Our Condamine Catchment Community with the
Capacity to Achieve a Sustainable Future

P O Box 544 Highfields Qld 4352



Condamine Catchment
Management Association

Est.
1992

#2 Lantana explosion @ Muntapa Tunnel Road



Our Condamine Catchment Community with the
Capacity to Achieve a Sustainable Future
P O Box 544 Highfields Qld 4352



#3 Lantana – from clean to rampant in 12 years.

Our Condamine Catchment Community with the Capacity to Achieve a Sustainable Future
P O Box 544 Highfields Qld 4352



#4 Box thorn in mountain coolabah open woodland.

1st stage of take over.



Our Condamine Catchment Community with the
Capacity to Achieve a Sustainable Future
P O Box 544 Highfields Qld 4352



**#5 Box thorn Up Close and Personal.
A nasty customer and difficult to treat.**



Our Condomine Catchment Community with the
Capacity to Achieve a Sustainable Future

P O Box 544 Highfields Qld 4352



#6 Lantana in early, readily treatable stages. Utilised by some native fauna as not only a food source (fruit) but by others as part of their habitat.

Our Condamine Catchment Community with the
Capacity to Achieve a Sustainable Future
P O Box 544 Highfields Qld 4352



**#7 Dense Lantana understory.
Limited use to fauna and excluding native flora in understorey.**



Our Condamine Catchment Community with the
Capacity to Achieve a Sustainable Future
P O Box 544 Highfields Qld 4352



#8 Very big meat ant nest. Early stages/readily manageable lantana infestation in eucalypt woodland @ Anduramba



Our Condamine Catchment Community with the Capacity to Achieve a Sustainable Future
P O Box 544 Highfields Qld 4352



#9 Box thorn. Incremental creep/headed for trouble @ Malu.

Our Condomine Catchment Community with the
Capacity to Achieve a Sustainable Future
P O Box 544 Highfields Qld 4352



#10 Peranga Property – no lantana for 12 years – now on the march.

Our Condamine Catchment Community with the
Capacity to Achieve a Sustainable Future

P O Box 544 Highfields Qld 4352



#11 Lantana @ Ravensbourne. Slashed in fore-ground with scattered lantana. Thickening under timber. Still manageable but ACT NOW!



Our Condamine Catchment Community with the Capacity to Achieve a Sustainable Future

P O Box 544 Highfields Qld 4352



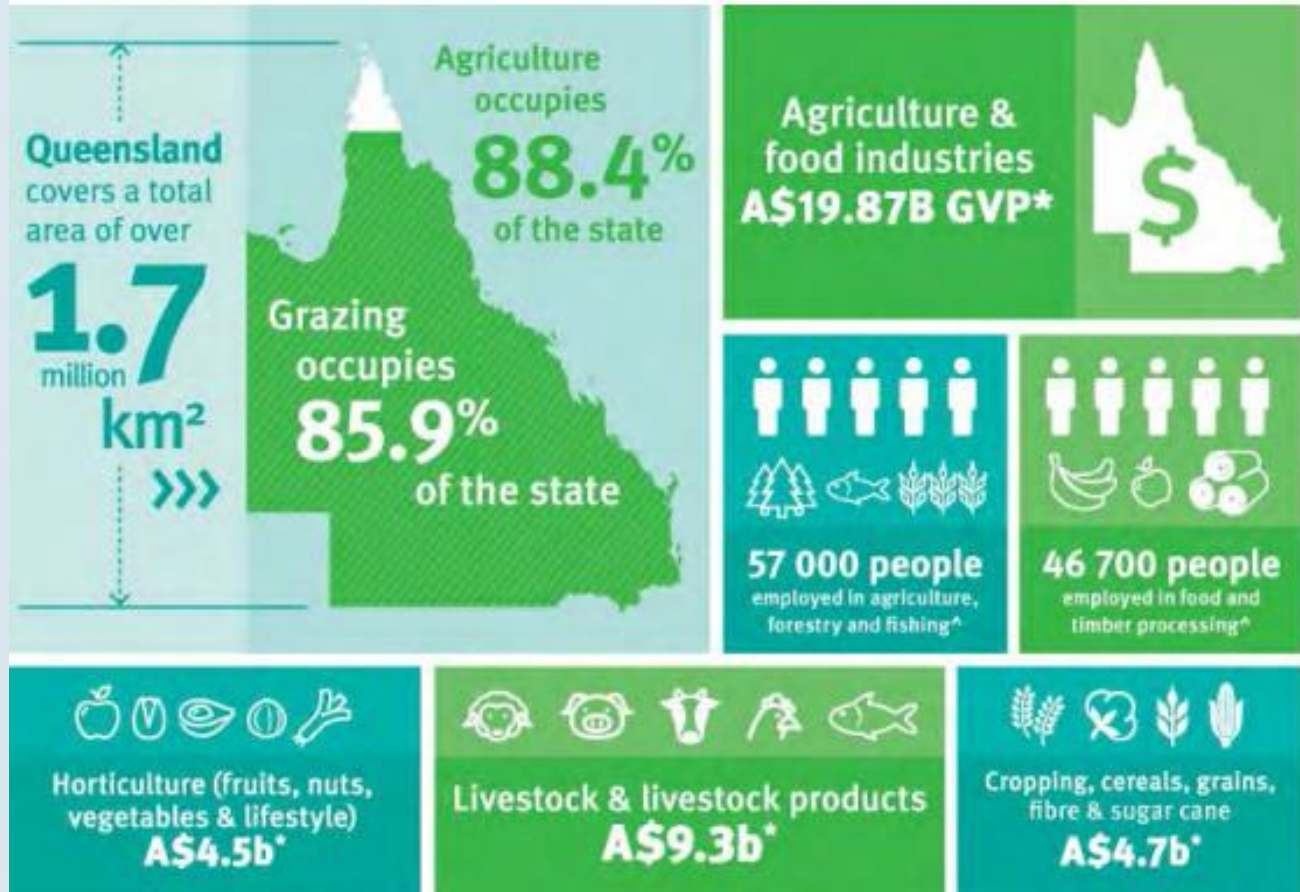
#12 Lantana thicket @ Ravensbourne.

Previous owners did nothing. Limited and expensive options left at this stage, by either machine or physical labour.



The reason why Agriculture is important to Qld Economy.

Our Condomine Catchment Community with the Capacity to Achieve a Sustainable Future
 P O Box 544 Highfields Qld 4352



Invasive plants (weeds)

Weeds cost Queensland an estimated \$600 million annually and have significant impacts on primary industries, natural ecosystems, and human and animal health.



Tools for Farmers

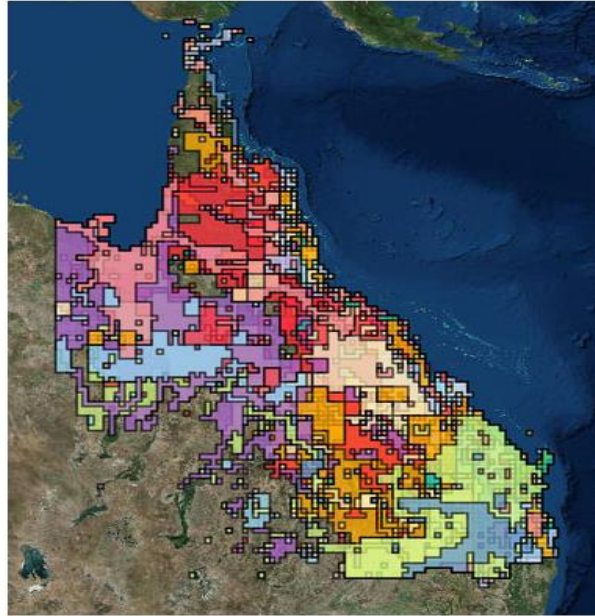


Pest distribution maps

Biosecurity Queensland produces a comprehensive series of pest distribution maps that show where over 100 invasive plants and animal species occur in Queensland

Online weed map

Use the [online weed map](#) to find out which priority invasive plants are located in certain areas or to understand the location of certain invasive plants. **Please note** that it can take 30-40 seconds to download all of the map data.



<https://www.daf.qld.gov.au/business-priorities/biosecurity/invasive-plants-animals/pest-mapping/distribution-maps>

PDF maps of invasive plants and animals

Maps can also be downloaded as PDF files. These are maps of individual invasive plants and animals and are coloured by their density and distribution.

<https://www.qld.gov.au/environment/plant-s-animals/plants/herbarium/weeds/weed-spotters>

Biosecurity Queensland (2020–2021 results) Building an effective biosecurity system for Queensland

Leading and promoting a biosecurity system that protects Queensland's economy, environment, lifestyle and human health.



Under the Biosecurity Act 2015 there is a general obligation on people to be aware of their surroundings and take action to prevent the introduction and spread of pests, diseases, weeds and contaminants.





Major biosecurity responses and programs in Queensland (2020–2021 results)

Surveillance for plant biosecurity threats

Surveying for a wide range of risks including Cucumber green mottle mosaic virus, Brown marmorated stink bug, Citrus canker, Tomato potato psyllid, Oriental fruit fly, and Asian gypsy moth

- A total of **8959** trap clearances.
- **6459** plant biosecurity samples collected and analysed of which **6006** were insect samples and **453** disease samples.

Queensland Feral Pest Initiative

- **\$38.74** million funding since 2015 to assist regional communities construct cluster fences and control invasive plants and animals.
- The Queensland Feral Pest Initiative has received a total of **\$38.74** million in funding since its inception in 2015, with **\$24.74** million contributed by the Queensland Government and **\$14** million by the Federal Government

Locations: Western Queensland Southern Queensland

National Transmissible Spongiform Encephalopathies (TSE) Surveillance Program

71 cattle and **26 sheep** were tested for TSEs to support market access and early detection.

Locations:		
Blackall	Carpentaria	McKinlay
Barcoo	Cloncurry	Murweh
Banana	Central Highlands	North Burnett
Barcardine	Flinders	Quilpie
Bundaberg	Longreach	Tiaro
Cook	Mount Isa	Whitsunday

National Arbovirus Monitoring Program

117 property visits to monitor for arboviruses to support market access and risk management

Surveillance locations:			
Balonne	Cassowary Coast	Isaac	Sunshine Coast
Barcoo	Central Highlands	Longreach	Torres Strait Island
Blackall Tambo	Cloncurry	Maranoa	Townsville
Boulia	Cook	Paroo	Western Downs
Bulloo	Etheridge	Quilpie	Winton
Carpentaria	Fraser Coast	Southern Downs	

Four Tropical Weeds (Limnocharis, Mikania vine and Miconia species) 1

Environmental and agricultural weed in North Queensland

- surveyed **5646** ha

Panama disease Tropical Race 4 3

Serious banana disease threatening Australia's \$580 million banana industry. Over 95% of Australian bananas are grown in Far North Queensland

- **1** new detection of the disease and **4** farms self-managing their biosecurity requirements
- **141** infected plants across five farms infested with Panama TR4
- Surveillance carried out on **266** properties, across **11 774** ha
- **115** compliance inspections and **129** compliance audits undertaken
- Leadership of disease management transitioning to industry in 2023

Electric Ants 2

Environmental, social and economic pest in Cairns

- **14.37** ha of infestation detected in **9** discrete areas
- **87** ha in **29** areas cleared of infestation and movement controls removed
- **907** ha surveyed including actioning of **923** public reports
- **629** ha treated
- **11 344** samples diagnosed

Varroa mite 4

Environmental and agricultural parasite of Asian honey bees in Townsville

- **512** actioned public reports
- **392** aerial pheromone trapping sites
- **451** catch box and remote catch box monitors
- **1671** targeted and general sweep net activities
- Visited **254** beekeepers and inspected **261** hives
- **66 300** Rainbow bee-eater pellets collected containing **450 780** European honey bee wings
- **136** bee identifications

* Note – this program ended 30 April 2021

Red witchweed 5

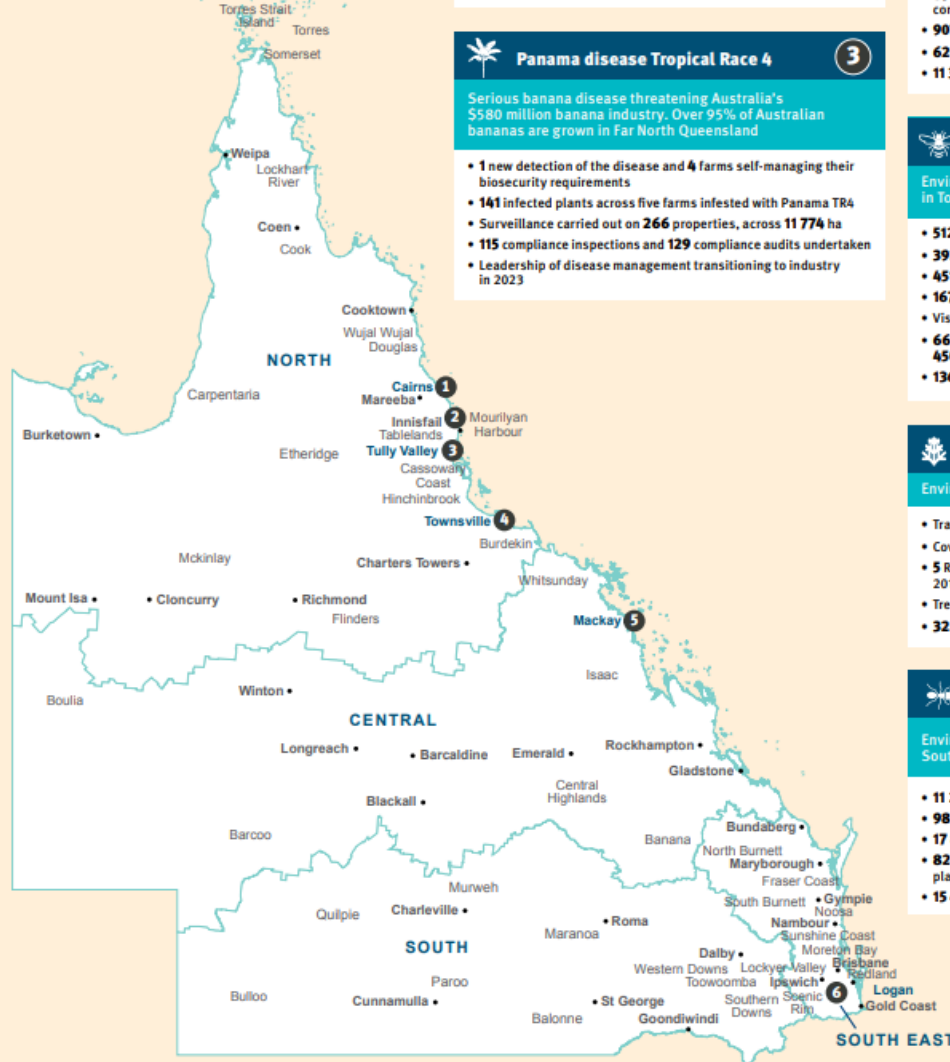
Environmental and agricultural weed near Mackay

- Traversed **11 948** km
- Covered **5974** ha of crop, headland and grazing pasture
- **5** Red Witchweed plants detected – a 99.99% decline since 2015–2016 (**3677** detections)
- Treated **94.3** ha
- **32.6** ha released from quarantine and treatment

Red Imported Fire Ants 6

Environmental, social and economic pest in South East Queensland

- **11 262** ant samples analysed
- **987** compliance audits across **11** industries
- **17 806** properties surveyed
- **82 980** properties treated and **323 103** ha received planned treatment
- **15 416** responses to public reports



Farmers role in Biosecurity

What is farm biosecurity?

- Farm biosecurity is a set of measures designed to protect a property from the entry and spread of pests, diseases and weeds.
- A biosecurity plan is a document (or range of documents) that outlines all of the biosecurity activities property owners work through to reduce the risks of pest and disease entry or spread.
- Farm biosecurity is your responsibility, and that of every person visiting or working on your property.



Free: **CCMA Membership Offers**

- Regional base view of Condamine catchment – up to date information
- Interaction with skilled and knowable people with a wide network
- Education and awareness activities
- Sounding board for ideas which is a 2 way process

Thank you for Your
Interest

CCMA contact 0429642092

